

The embedding of safety case in societal dialog and decision making

Presented at

Symposium 25 January 2007, Paris

Kaj Nilsson

Project Local Competence Building LKO

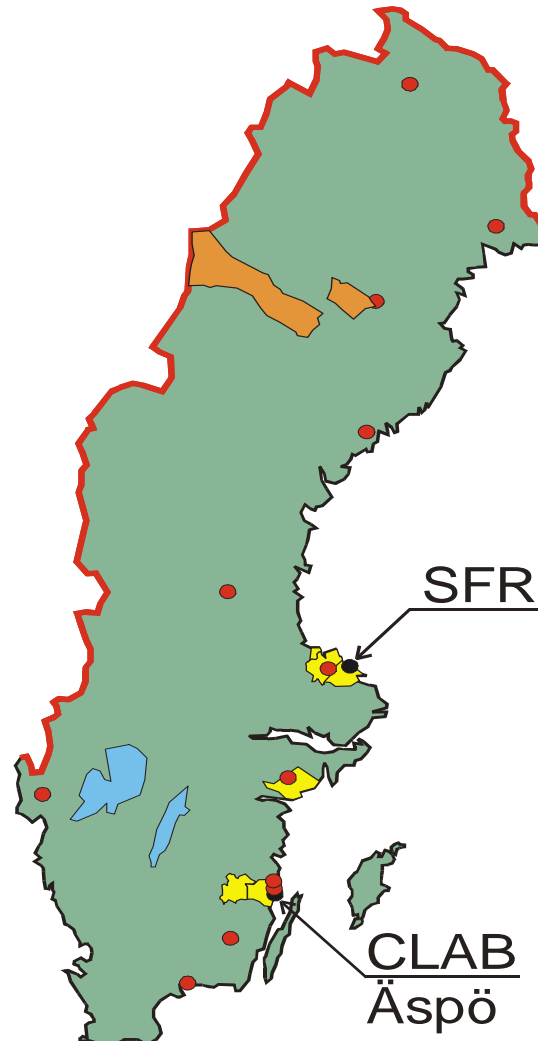
Nuclear Waste

Municipality of Oskarshamn

Disposition

- General Background
- Introduction
- How to establish an acceptable safety case
- A clear description about the project
- An open process for participation and influence
- Facts values and stretching
- How do we work in Oskarshamn
- Conclusions

Sweden



Municipality planning monopoly and veto





Oskarshamns
kommun

26000 inhabitants

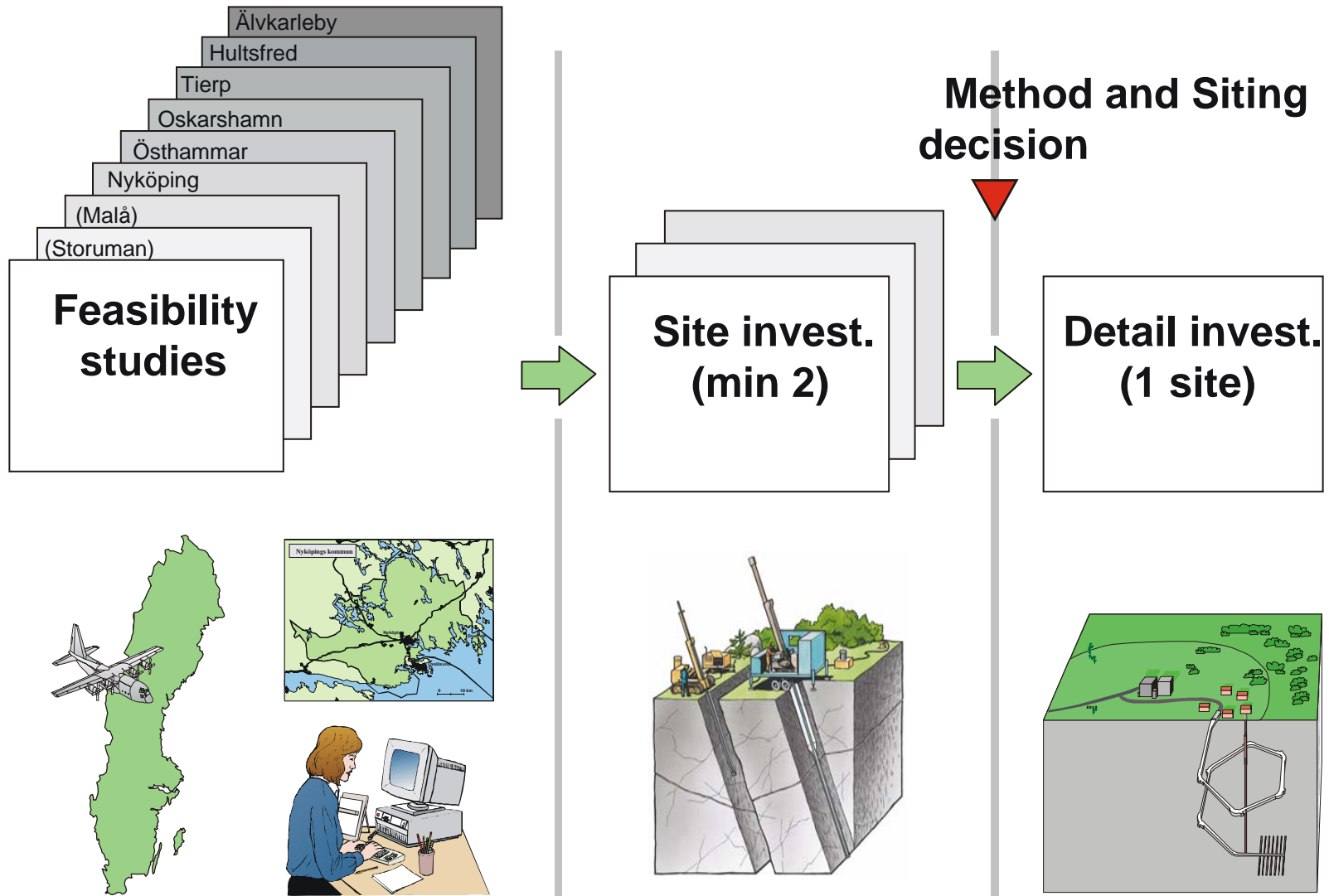


The Simpevarp Peninsula, Oskarshamn Sweden



NPP 13% of Sweden's electricity prod - Interim storage CLAB

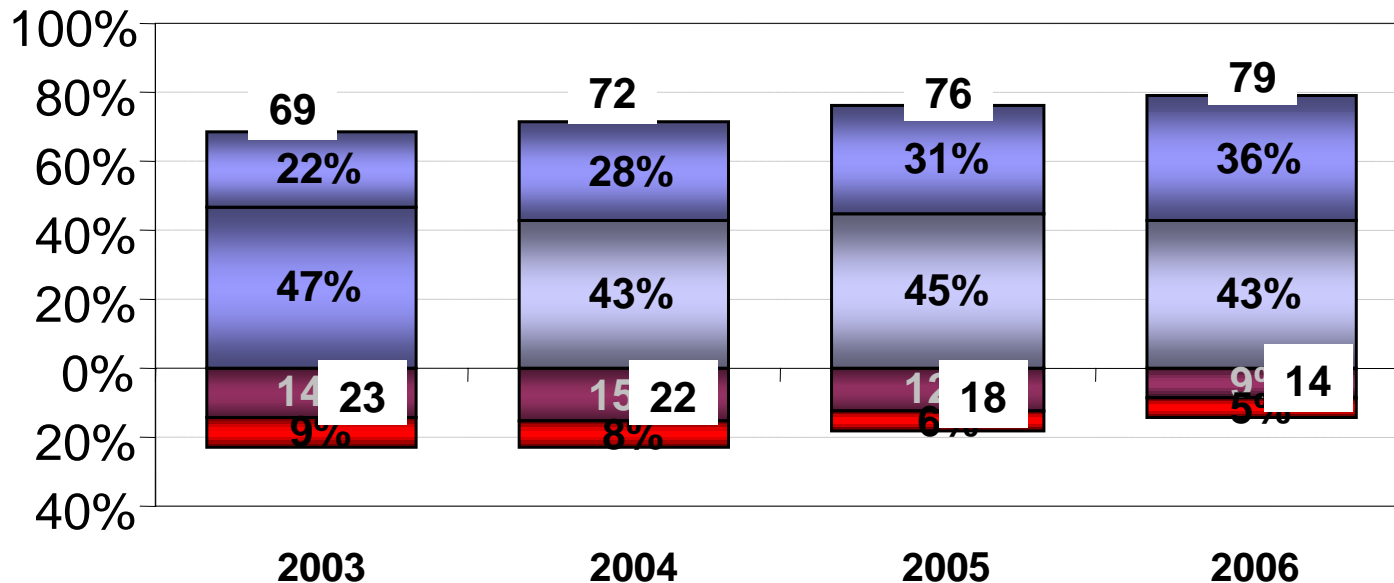
The Swedish Site Selection Process



Oskarshamn-HLW-History

- 1992 announced preferred site for encapsulation plant
- 1995 request for feasibility study
- 1999 feasibility study complete
- 2000 request for site investigation - one of two
- 2002 yes to site investigation and initiation

If there is a suitable site for a repository in Oskarshamn are you....to locate a final deep repository for nuclear waste in the municipality?



■ Absolut negative
 ■ Negative
 ■ Positive
 ■ Absolut positive

Introduction

- **The key question - Is a repository safe?**
- **HLW disposal has an unique time span**
- **All parties incl. the public agrees that we must solve the problem**
- **So how do we establish trust in the safety case?**

Introduction cont

- Trust in the safety case must come from**
- sound and balanced participation by all stakeholders**
 - by giving up expert control**
 - by including laymen early - like it or not - final decisions will be taken by laymen**

Can we have an acceptable safety
case among laymen?

A clear description about the project

- **The problem - spent nuclear fuel is extremely hazardous for at least 100.000 years.**
- **After looking at alternatives a majority of experts recommend geological disposal**
- **Keep the door open for new solutions**

A well defined decision making process

- **Process is as important as content!**
- **Define the actors and their roles**
- **Define participation - how and when**
- **Realise the importance of the regulator**
- **A local veto empowers the public and the local decision makers. A local referendum?**

The importance of an open process

- **For the public the project starts when it is put on the map**
- **Let it take time to bring the public on board**
- **Realise that there is a lot of local expertise - that can form a better project - if you listen**
- **Admit uncertainties**
- **Admit necessity of more R&D**

Facts values and stretching

- **Start to think in terms of a working model**
- **The public will tell what issues are of interest**
- **Set up many various forums**
- **Admit that there are both facts and values**
- **Realise the importance of environmental groups in the stretching process**

How do we work?

- **Municipalities in Sweden have a strong and independent position**
- **Veto possibility**
- **Experiences with nuclear operations**
- **Authorities have credibility**
- **Clear party roles – government, regulators, implementer, municipality**
- **Step by step process**

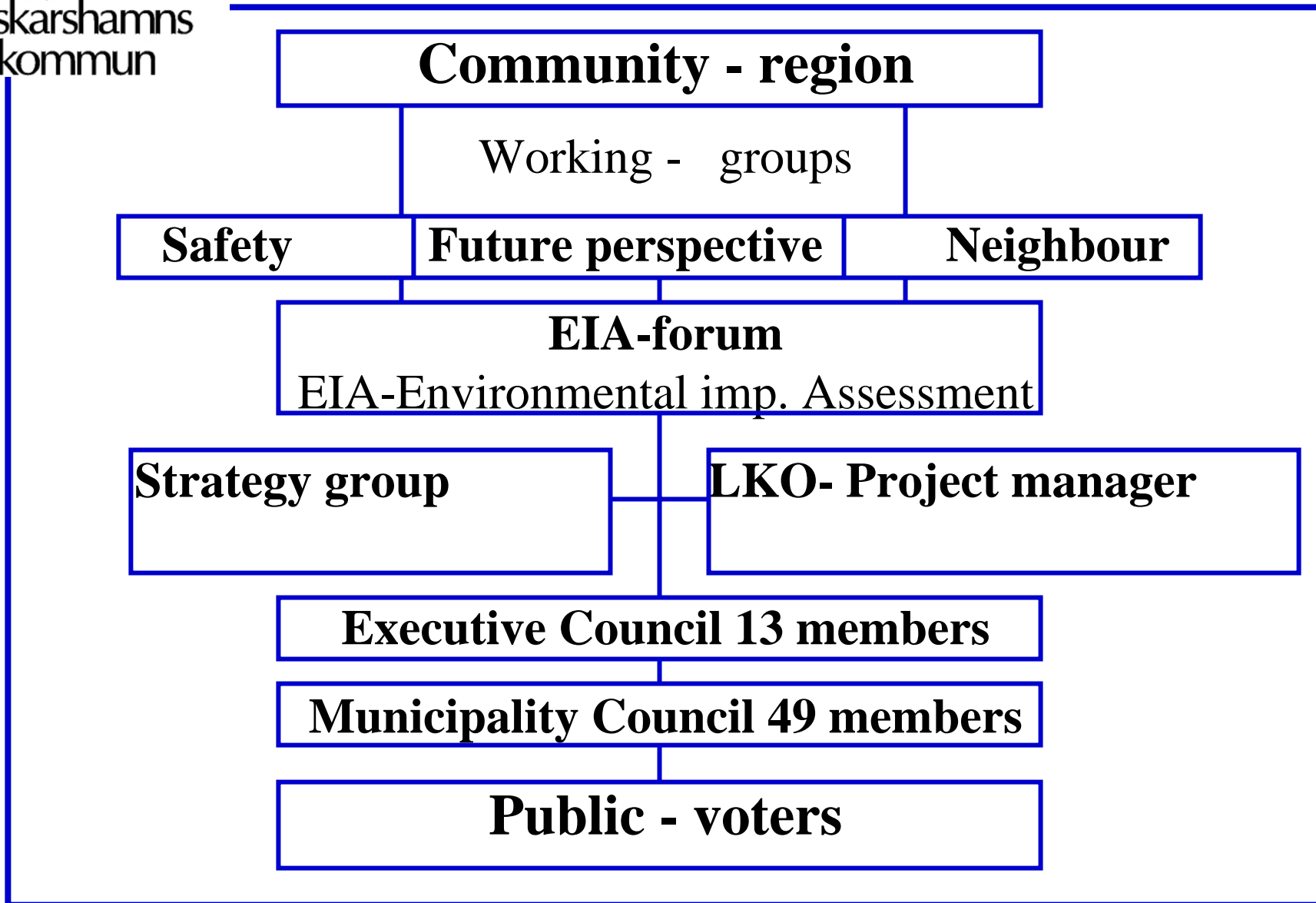
The Oskarshamn model

- **Full openness, participation and influence**
- **The EIA the legal framework**
- **The council the local client**
- **The public a resource**
- **The environmental groups a resource**
- **The regulatory authorities our experts**
- **Stretching of SKB and the regulators**



Oskarshamns
kommun

Organisation



Conclusion

Safety for the public is a feeling of trust for politicians, industri, regulators and for the process

- **Long time to build trust**
- **Communicate - participate**
- **Realistic timetable**
- **Predictable process**
- **Openness**

The Oskarshamn case proves that the public
can discuss complex issues as long time
safety!

Thank you for your attention!

